



# HSE University

## Facts and Figures

Moscow  
2023

[admissions.hse.ru/en](https://admissions.hse.ru/en)



# Contents

---

Facts and Figures

Admissions

Contacts

## HSE University's Core Values

---







*Nikita Anisimov*  
*Rector, HSE University*

## **Dear friends,**

A truly modern university brings together education, science, and expert analysis, while also making contributions to the development of society, acting as a driver of economic growth and operating as a centre of innovation and social mobility.

For 30 years now, we have worked hard to deepen ties with our partners and colleagues from Russian and international academic institutions alike. We currently offer dozens of double-degree programmes with top universities and are continuing to develop joint departments with leading companies, while also producing thousands of highly qualified and in-demand professionals.

HSE University instils in its graduates the most desired key skills on the domestic and global markets. Furthermore, our educational model is entirely project-based: our partners directly involve HSE students in applied projects. In turn, our students acquire valuable experience and skills.

For instance, our students and specialists launch satellites, take part in expeditions throughout the whole of Russia and draw up urban development strategies. Since our founding, HSE University has strived to become a new breed of academic institution – a contemporary university for anybody who isn't afraid of hard work and remains open to new opportunities and at the forefront of today's academic trends. We can proudly state that we've already achieved this.

Today, HSE University is the most successful young university in Russia, bringing together top Russian and international scholars and professionals under the slogan 'It's not for school, but for life that we study.'



# HSE University Faculties

---

OUR FACULTIES		
Faculty of Social Sciences	Faculty of Economic Sciences	Faculty of Humanities
Faculty of Creative Industries	Faculty of Computer Science	Faculty of Urban and Regional Development
	Faculty of World Economy and International Affairs	
Faculty of Law	Faculty of Mathematics	Faculty of Chemistry
Faculty of Geography and Geoinformation Technologies		Faculty of Biology and Biotechnology
HSE Tikhonov Moscow Institute of Electronics and Mathematics (MIEM HSE)	Graduate School of Business	International College of Economics and Finance
	Faculty of Physics	School of Foreign Languages

Since its foundation in 1992,

## National Research University Higher School of Economics (HSE University)

has been one of Russia's leading academic institutions, operating as an educational, project analytical, research and consulting centre in a wide range of economic and social sciences, the humanities, mathematics, computer science and engineering fields, as well as communications, media and design.

### INFORMATION ON CAMPUSES



#### Moscow



Moscow is a rapidly changing metropolis, located directly at the intersection of Russian and global culture and economics. At HSE University, one can take full advantage of everything offered by this great city, even on a student budget. The University's main campus is located in Moscow's historical centre, just a 10-minute walk from the Kremlin's doorstep. Kitay-Gorod, this vibrant student district, has a lot to offer in terms of cafes, museums and art spaces.

[hse.ru/en](http://hse.ru/en)

#### St. Petersburg



The HSE University regional campus in St. Petersburg includes the Schools of Economics and Management, Social Sciences and Area Studies, Arts and Humanities, Physics, Mathematics and Computer Science, as well as the Saint Petersburg School of Law. There, students can take part in 30 full-cycle programmes, including two Master's degree programmes taught in English. Furthermore, the campus is home to two international labs, while the city itself, globally renowned as the cultural capital of Russia, is ideal for international students.

[spb.hse.ru/en](http://spb.hse.ru/en)

**OVER 51,000 UNDERGRADUATE, GRADUATE AND DOCTORAL STUDENTS** NOW STUDY AT HSE UNIVERSITY, WHERE **311** BACHELOR'S AND MASTER'S DEGREE PROGRAMMES ARE OFFERED.

**TODAY, HSE UNIVERSITY HAS FOUR REGIONAL CAMPUSES IN:** MOSCOW, ST. PETERSBURG, NIZHNY NOVGOROD AND PERM.



## Nizhny Novgorod



The University's Nizhny Novgorod campus was founded in 1996 and offers Bachelor's and Master's degree programmes alike. Nizhny Novgorod is a major city with a small-town feel. Thanks to its historical landmarks and many cultural sites, the city has been included in the UNESCO World Heritage List.

[nnov.hse.ru/en](http://nnov.hse.ru/en)



## Perm



HSE University's Perm campus offers programmes in informatics, economics, history, law and management. Located not too far from the Ural Mountains at the gateway to Siberia, Perm is a rapidly developing city with a rich cultural life, including museums, theatres and art galleries.

[perm.hse.ru/en](http://perm.hse.ru/en)



# HSE UNIVERSITY IS AMONG THE TOP WORLD'S UNIVERSITIES IN GLOBAL RANKINGS

---

## 47

positions in QS, THE and ARWU  
subject/sectoral rankings

## for 24 subjects

1st place in Russia,  
or the sole Russian university to appear  
in QS, THE and ARWU subject/sectoral  
rankings

## 28

positions in QS subject/sectoral  
rankings (four sectors)

## for 6 subjects

the sole Russian university to appear  
in QS, THE and ARWU subject/sectoral  
rankings

## 9

positions in THE subject rankings

## 14

positions in the Top-100 QS, THE  
and ARWU subject/sectoral rankings



## 10

positions in ARWU subject rankings



## 34

positions in the Top-300 QS, THE  
and ARWU subject/sectoral rankings



# HSE UNIVERSITY: RESEARCH



## 50

international labs headed  
by top Russian and foreign scientists

## around 300

grants every year from research funds

## ~130

basic research projects every year

## ~500

applied research projects every year

### **MEGASCIENCE-CLASS RESEARCH INFRASTRUCTURE:**

Joint Economic and Social Data Archive;  
Russian Longitudinal Monitoring  
Survey – HSE; iFORA intelligent  
foresight analytics tool; HARISMa  
supercomputer

# HSE UNIVERSITY: A GLOBAL INSTITUTION

---

**GRANTS COVERING  
20%-100% OF  
TUITION COSTS FOR  
INTERNATIONAL  
APPLICANTS**

**about 5,500**  
international students from  
139 countries

**ranks among the  
TOP-100**  
young universities in the world

**over 200**  
scholars from more than 25 countries  
and leading academic institutions  
provide lectures at HSE University

**60**  
programmes in partnership with  
global universities

**over 40**  
programmes taught entirely in English

**around 2,000**  
courses offered in English

**70%**  
of teachers are scholars with globally  
recognized research findings

**over 100**  
international partner institutions taking  
part in student exchanges with  
HSE University

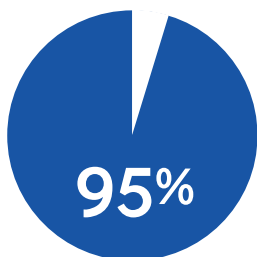
---

**INTERNATIONAL  
SUPPLEMENTS TO HSE  
UNIVERSITY-ISSUED  
DIPLOMAS,**  
necessary for admission to foreign  
universities and employment at  
international companies



# HSE UNIVERSITY: FACTS

---

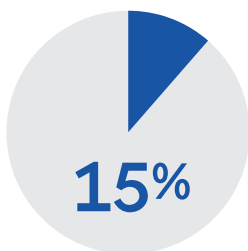


employment rate of graduates within  
six months after completion of studies

---

**\$2,200-3,200**  
per month

AVERAGE WAGE FOR ALUMNI WITHIN  
THE FIRST FIVE YEARS AFTER  
GRADUATION (ACCORDING TO  
SUPERJOB, 2021)



of graduates continue their academic  
career overseas



**1<sup>st</sup>** place

in the Top-100 best Russian universities  
(according to *Forbes Russia* 2021, 2022)

**4<sup>th</sup>** place

for graduate employment rate  
(according to the RAEX rating, 2021)

**2<sup>nd</sup>** place

in Russia for wage level of graduates  
from economics universities  
(according to *SuperJob*, 2021)

# HSE UNIVERSITY: EXPERT SERVICES



HSE University experts sit on

## **10 COMMISSIONS AND OVER 30 WORKING GROUPS UNDER THE GOVERNMENT OF THE RUSSIAN FEDERATION**

and are engaged in operations of major international organizations: G20, BRICS, OECD, UNESCO, UNIDO, ITU, APEC, etc.

over **200**

clients for applied research  
every year

over **70,000**

expert commentaries from HSE University  
experts appeared in the media in 2020

over **200**

analytical materials produced for the  
Presidential Executive Office of Russia  
and the Apparatus of the Government  
of the Russian Federation

over **1,500**

teams has completed HSE Business  
Incubator programmes over the last  
three years

# HSE UNIVERSITY: A MULTI-DISCIPLINARY INSTITUTION

over **51,000**

undergraduate, graduate and doctoral  
students in the 2021-2022 academic year

over **90,000**

alumni from degree programmes

## 20 DOCTORAL SCHOOLS

COMMUNITIES BRINGING TOGETHER  
DOCTORAL STUDENTS, ACADEMIC  
SUPERVISORS OF VARIOUS SCHOOLS,  
DEPARTMENTS, CENTRES, LABS AND  
REGIONAL CAMPUSES IN SPECIFIC  
DOCTORAL FIELDS





# HSE UNIVERSITY: AN OPEN INSTITUTION



around **100**

learners are admitted to the 'Social Lift' programme every year

over **200,000**

subscribers to HSE University social network accounts

around **165,000**

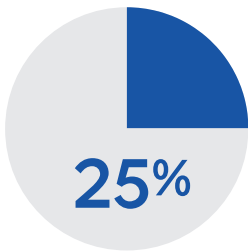
HSE University mentions in the media every year

over **3,000** participants

in the Yasin (April) International Academic Conference on Economic and Social Development

# HSE UNIVERSITY: INNOVATION

## MODULAR SYSTEM, SELECTION OF INDIVIDUAL EDUCATIONAL TRACKS AND OBLIGATORY PROJECT ACTIVITIES



academic courses are taught across  
all four regional campuses

### COMBINED 'MASTER'S PhD' TRACK

#### DATA CULTURE

cross-curricular digital data module  
pursued by students of all programmes;  
VR technologies used for lectures  
and e-courses

### 17 DEGREE PROGRAMMES OFFERED ONLINE

four Bachelor's and 13 Master's degree  
programmes in 2022

#### MODULES

which compliment students' professional  
development:  
Minors, Magolego – running as parts  
of programmes

#### MICRODEGREE

option to obtain additional qualification  
beyond a programme's standard study load

#### SMARTPOINT

digital ecosystem connects students with  
all HSE University services and staff

# HSE UNIVERSITY: ACTIVITIES



over **700**

curators assist first-year students in getting acquainted with university life

**INVOLVEMENT  
OF STUDENTS  
IN ACADEMIC AND  
PROJECT ACTIVITIES,**

including paid employment

over **200**

student organizations in music, sport, theater, business and career, media, etc.

over **4,000**

students work as research assistants, academic and teaching assistants, study consultants

over **700**

student initiatives, including over 170 projects that have received financial support

**8** committees

under the HSE University Student Council, standing up for the interests and rights of learners



# HSE UNIVERSITY: **SOCIAL RESPONSIBILITY**

---

## **180 PUBLIC PROJECTS AND INITIATIVES**

involving people aged 5 to 85

---

## **DEVELOPED VOLUNTEER ORGANIZATIONS AND NEW FORMATS FOR ACTIVITIES:**

digital volunteers, volunteer tutors,  
volunteer mentors

---

## **UNIVERSITY OPEN TO THE CITY PROJECT**

open lectures, educational, cultural,  
entertainment, charitable and other  
events with over 50,000 attendees  
every year

## **FINDING SOLUTIONS TO GLOBAL ISSUES AND CHALLENGES**

at the local level thanks to embracing  
the third mission for universities

---

## **GREEN HSE**

an organization of students, doctoral  
students and alumni of HSE University,  
who, jointly with its administration, aim  
to make our institution 'green'

---

# HSE UNIVERSITY: PARTNERSHIPS



## UNIVERSITY PARTNERSHIP PROGRAMME TO SUPPORT REGIONAL ACADEMIC INSTITUTIONS

funded by HSE University; projects are accessible and open to all of Russia's educational community

**MORE THAN 400 PARTNER  
UNIVERSITIES FROM  
69 COUNTRIES**

---

## 80 JOINT DEPARTMENTS

with various organizations, institutes and companies, including 30 joint departments with the Russian Academy of Sciences

---

## HIRING OVER 50 POSTDOCS

from Russian universities and research organizations every year

over **20**

projects with mirror laboratories, supporting joint research projects with regional universities every year

## INSTRUCTION OF STUDENTS FROM OTHER RUSSIAN ACADEMIC INSTITUTIONS

through HSE University e-courses;  
50 partner universities,  
involving 10,000 learners

# HSE UNIVERSITY: AN INTELLECTUAL ENVIRONMENT

---

## HSE INTERNATIONAL OLYMPIAD (INTO HSE)

was held in 2014. University's biggest international project. INTO HSE offers Winners and laureates scholarships and grants. International citizens, and stateless persons enrolled in grades 10-11 (11-12) and expats living and studying at high schools in Russia may take part.

---

## HIGHER LEAGUE

for students and graduates was held in 2009; it covers a wide range of fields and tracks, reflecting diverse professional interests of its participants. Students and graduates of other universities can take part regardless of citizenship.

---

## TOP CLASS COMPETITION

was held in 2016 for school students in grades 8-11 (9-12). There contenders carry out and defend their research and project works in various fields, from the humanities to technical sciences.

---

## VYSSHAYA PROBA

has been held since 1998. School students in grades 7-11 (8-12) from all Russian regions, as well as other countries, may take part. The Olympiad's first round is held online, followed by a second, on-site, round, which includes tests and written essays



# HSE UNIVERSITY: A DIGITAL SPACE

---

## A SINGLE VIRTUAL LEARNING ENVIRONMENT (SmartLMS)

HSE University's virtual learning environment brings together all stakeholders in the academic process.

Teachers upload course materials, assignments and tests, while students submit their homework.

---

## HSE MOBILE APPS FOR LEARNERS

HSE AppX – an app that can help users view their timetables, course grades, ratings at any period, etc.

'Vyshka.Navigation' – a detailed navigator for all HSE University buildings on Pokrovka, Shabolovka, Myasnitskaya and Malaya Ordynka of the Moscow campus.

## DIGITAL BUDDIES: DIGITAL SUPPORT FOR INTERNATIONAL STUDENTS

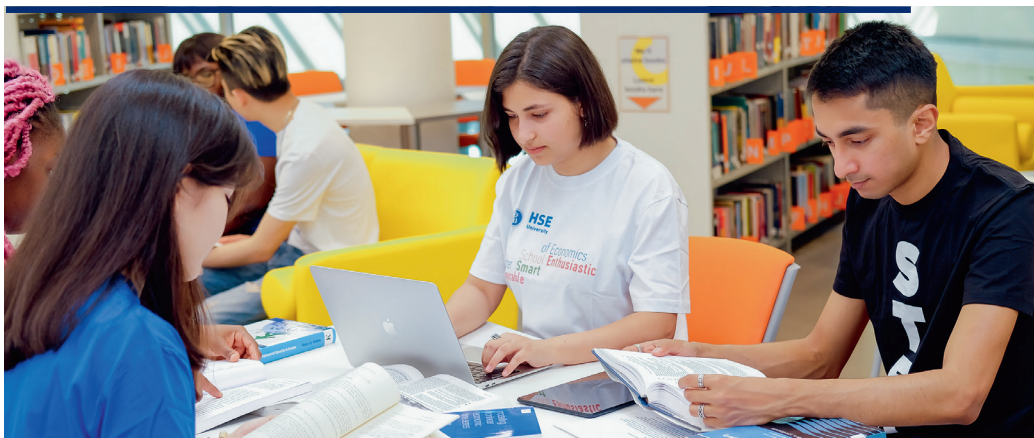
This is a digital support service where enquiries from international students at HSE University are processed.

Digital Buddies help students navigate our institution's digital space.

Specialists can provide assistance on all issues related to operations of digital platforms, services, systems and resources at the University.



# HSE UNIVERSITY: USEFUL INFO



## CAFETERIAS AND CAFES

located in all HSE University buildings, offering nutritious meals at an affordable price.

## SPORTS AND RECREATION

- gyms
- sports clubs and groups
- student sports organizations

Participants may both train with student athletic organizations and create and launch new sports-based projects.

## HSE LIBRARY

The HSE Library's stock includes over 700,000 academic materials.

9 libraries operate on Moscow campus.

The Central Library is located at the Pokrovka Complex on Pokrovsky Bulvar, Moscow.

The reading room at the Central HSE Library works 24/7.

## HSE BOOKSHOP

**At BookVyshka, the University's bookstore, visitors can buy:**

- HSE University publications (printed by the HSE Publishing House)
- works on various topics by Russian and foreign authors
- HSE University branded merchandise



# HOW CAN I APPLY TO HSE UNIVERSITY?

---

## Undergraduate Studies:



## Graduate Studies:



---


**Credit transfer system for national and international examination and Olympiad results.**

**Accommodation in modern, comfortable dormitories and rented student housing.**

More detailed information on international admissions can be found at:  
**[admissions.hse.ru/en](https://admissions.hse.ru/en)**

Contact us at:

 <https://vk.com/hse.inter>

 [https://t.me/HSE\\_admissionsBA](https://t.me/HSE_admissionsBA)  
<https://t.me/HSEenter>

 +7 916 311 85 21 WhatsApp/Telegram

 [inter@hse.ru](mailto:inter@hse.ru)



