



HSE University

Facts and Figures

Moscow
2023

admissions.hse.ru/en



Contents

Facts and Figures

On Admissions

Contacts

HSE University's Core Values





Nikita Anisimov
Rector, HSE University

Dear friends,

HSE University is a contemporary institution, which combines education, research and expert activities, while also contributing to the development of society and serving as a driver of economic growth. Our institution is also a centre of innovation and a powerful venue for social mobility.

For 30 years, we have strived to enhance ties with our partners and colleagues from Russian and foreign universities. We implement dozens of double-degree programmes with top universities, open joint departments with leading corporations and train tens of thousands of highly qualified and sought-after professionals.

HSE University instils in its graduates the most in-demand key skills for today's markets, whether domestic or international. In addition, project work is at the core of our educational model. For instance, students deal with real-life tasks set by our corporate partners. And it is through projects that students gain necessary experience and skills. For instance, our students and staff members launch satellites, take part in expeditions throughout Russia and devise urban planning strategies.

From its very founding, the University has aimed to become a new type of academic institution, namely a modern university for everyone not afraid of hard work, for those open to everything new and ready to keep their finger on the pulse. We can definitely say that we have achieved this. Today, HSE University is the most successful young Russian academic institution, bringing together Russian and foreign professors and scholars under the slogan 'It's not for school but for life that we study.'

HSE University Faculties

OUR FACULTIES		
Faculty of Social Sciences	Faculty of Economic Sciences	Faculty of Humanities
Faculty of Creative Industries	Faculty of Computer Science	Faculty of Urban and Regional Development
	Faculty of World Economy and International Affairs	
Faculty of Law	Faculty of Mathematics	Faculty of Chemistry
Faculty of Geography and Geoinformation Technologies		Faculty of Biology and Biotechnology
HSE Tikhonov Moscow Institute of Electronics and Mathematics (MIEM HSE)	Graduate School of Business	International College of Economics and Finance
	Faculty of Physics	School of Foreign Languages

Since its foundation in 1992,

National Research University Higher School of Economics (HSE University)

has been one of Russia's leading academic institutions, operating as an educational, project-based, analytical, research and consulting centre in a wide range of economic and social sciences, humanities, mathematics, computer science and engineering fields, as well as communications, media and design.

INFORMATION ON CAMPUSES



Moscow



Moscow is a rapidly changing metropolis, located directly at the intersection of Russian and global culture and economics. At HSE University, one can take full advantage of everything offered by this great city, even on a student budget. The University's main campus is located in Moscow's historical centre, just a 10-minute walk from the Kremlin's doorstep. Kitay-Gorod, this vibrant student district, has a lot to offer in terms of cafes, museums and art spaces.

hse.ru/en



St. Petersburg



The HSE University regional campus in St. Petersburg includes the Schools of Economics and Management, Social Sciences and Area Studies, Arts and Humanities, Physics, Mathematics and Computer Science, as well as the Saint Petersburg School of Law. There, students can take part in 30 full-cycle programmes, including two Master's degree programmes taught in English. Furthermore, the campus is home to two international labs, while the city itself, globally renowned as the cultural capital of Russia, is ideal for international students.

spb.hse.ru/en

OVER 51,000 UNDERGRADUATE, GRADUATE AND DOCTORAL STUDENTS NOW STUDY AT HSE UNIVERSITY, WHERE **311** BACHELOR'S AND MASTER'S DEGREE PROGRAMMES ARE OFFERED.

TODAY, HSE UNIVERSITY HAS FOUR REGIONAL CAMPUSES IN: MOSCOW, ST. PETERSBURG, NIZHNY NOVGOROD AND PERM.



Nizhny Novgorod



The University's Nizhny Novgorod campus was founded in 1996. Today, it implements international summer schools, exchange semesters and a variety of Bachelor's and Master's degree programmes alike. Nizhny Novgorod is a major city with a small-town feel. Thanks to its historical landmarks and many cultural sites, the city has been included in the UNESCO World Heritage List.

nnov.hse.ru/en



Perm



HSE University's Perm campus offers programmes in informatics, economics, history, law and management. Located not too far from the Ural Mountains at the gateway to Siberia, Perm is a rapidly developing city with a rich cultural life, including museums, theatres and art galleries.

perm.hse.ru/en

HSE UNIVERSITY IS AMONG THE TOP WORLD'S UNIVERSITIES IN GLOBAL RANKINGS

47

positions in QS, THE and ARWU
subject/sectoral rankings

for **24** subjects

1st place in Russia,
or the sole Russian university to appear
in QS, THE and ARWU subject/sectoral
rankings

28

positions in QS subject/sectoral
ranking (four sectors)

for **5** subjects

the sole Russian university to appear
in QS, THE and ARWU subject/sectoral
rankings

9

positions in THE subject ranking

16

positions in the Top-100 QS, THE
and ARWU subject/sectoral rankings



10

positions in ARWU subject ranking



34

positions in the Top-300 QS, THE
and ARWU subject/sectoral rankings



HSE UNIVERSITY: RESEARCH



50

international labs headed
by top Russian and foreign scientists

around 300

grants every year from research funds

~130

basic research projects every year

~500

applied research projects every year

MEGASCIENCE-CLASS RESEARCH INFRASTRUCTURE:

Joint Economic and Social Data Archive;
Russian Longitudinal Monitoring
Survey – HSE; iFORA intelligent
foresight analytics tool; HARISMa
supercomputer

HSE UNIVERSITY: A GLOBAL INSTITUTION

**GRANTS COVERING
20%-100% OF
TUITION COSTS FOR
INTERNATIONAL
APPLICANTS**

over **5,000**
international students

ranks among the
Top-100
young universities in the world

over **200**
scholars from more than 25 countries
and leading academic institutions
provide lectures at HSE University

60
programmes in partnership with
global universities

over **40**
programmes taught entirely in English

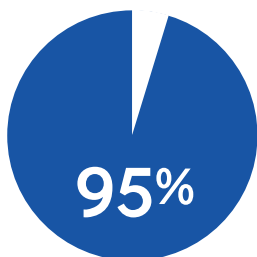
around **2,000**
courses offered in English

70%
of teachers are scholars with globally
recognized research findings

over **100**
international partner institutions taking
part in student exchanges with
HSE University

**INTERNATIONAL
SUPPLEMENTS TO HSE
UNIVERSITY-ISSUED
DIPLOMAS,**
necessary for admission to foreign
universities and employment in
international firms

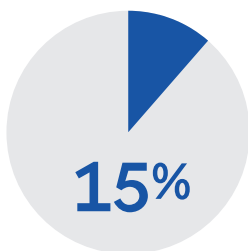
HSE UNIVERSITY: FACTS



employment rate for graduates six months after completion of studies

\$2,200-3,200

AVERAGE WAGE FOR ALUMNI WITHIN THE FIRST FIVE YEARS AFTER GRADUATION (ACCORDING TO SUPERJOB, 2021)



of graduates continue their academic career overseas



1st place

in the Top-100 best Russian universities (according to Forbes magazine, 2021)

4th place

for graduate employment rate (according to the RAEX rating, 2021)

2nd place

in Russia for wage level for schools of economics' graduates (according to SuperJob, 2021)

HSE UNIVERSITY: EXPERT SERVICES



HSE University experts sit on

10 COMMISSIONS AND OVER 30 WORKING GROUPS UNDER THE GOVERNMENT OF THE RUSSIAN FEDERATION

and are engaged in operations of major international organizations: OECD, UNESCO, UNIDO, ITU, APEC, etc.

over **200**

clients for applied research
every year

over **70,000**

expert commentaries from HSE University
experts appeared in the media in 2020

over **200**

analytical materials produced for the
Presidential Executive Office of Russia
and the Apparatus of the Government
of the Russian Federation

over **1,500**

teams has completed HSE Business
Incubator programmes over the last
three years

HSE UNIVERSITY: A MULTI-DISCIPLINARY INSTITUTION

over **51,000**

undergraduate, graduate and doctoral students in the 2021-2022 academic year

over **90,000**

alumni from degree programmes

20 DOCTORAL SCHOOLS

COMMUNITIES BRINGING TOGETHER
DOCTORAL STUDENTS, ACADEMIC
SUPERVISORS OF VARIOUS SCHOOLS,
DEPARTMENTS, CENTRES, LABS AND
REGIONAL CAMPUSES IN SPECIFIC
DOCTORAL FIELDS



HSE UNIVERSITY: AN OPEN INSTITUTION



around **100**

learners are admitted to the 'Social Lift' programme every year

over **200,000**

subscribers to HSE University social network accounts

around **165,000**

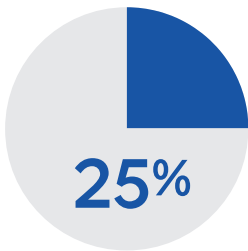
HSE University mentions in the media every year

over **3,000** participants

engage in open discussion at the Yasin (April) International Academic Conference on Economic and Social Development

HSE UNIVERSITY: INNOVATION

MODULAR SYSTEM, SELECTION OF INDIVIDUAL EDUCATIONAL TRACKS AND OBLIGATORY PROJECT ACTIVITIES



academic courses are taught across
all four regional campuses

COMBINED 'MASTER'S – PhD' track

DATA CULTURE

cross-curricular digital data module
pursued by students of all programmes;
VR technologies used for lectures
and e-courses

17 DEGREE PROGRAMMES OFFERED ONLINE

four Bachelor's and 13 Master's degree
programmes in 2022

MODULES,

which compliment students' professional
development:

- Minors, Magolego – running as parts
of programmes

MICRODEGREE

option to obtain additional qualification
beyond a programme's standard study load

SMARTPOINT

digital ecosystem connects students with
all HSE University services and staff

HSE UNIVERSITY: ACTIVITIES



over **700**

curators assist first-year students
in getting acquainted with university
life

**INVOLVEMENT
OF STUDENTS
IN ACADEMIC AND
PROJECT ACTIVITIES,**

including paid employment

over **200**

student organizations in music, sport,
theater, business and career, media, etc.

over **4,000**

students work as research assistants,
academic and teaching assistants, study
consultants

over **700**

student initiatives, including over 170
projects that have received financial
support

8 committees

under the HSE University Student
Council, standing up for the interests
and rights of learners

HSE UNIVERSITY: SOCIAL RESPONSIBILITY

180 PUBLIC PROJECTS AND INITIATIVES

involving people aged 5 to 85

DEVELOPED VOLUNTEER ORGANIZATIONS AND NEW FORMATS FOR ACTIVITIES:

digital volunteers, volunteer tutors,
volunteer mentors

UNIVERSITY OPEN TO THE CITY PROJECT

open lectures, educational, cultural,
entertainment, charitable and other
events with over 50,000 attendees every
year

FINDING SOLUTIONS TO GLOBAL ISSUES AND CHALLENGES

at the local level thanks to embracing
the third mission for universities

GREEN HSE

an organization of students, doctoral
students and alumni of HSE University,
who, jointly with its administration, aim
to make our institution 'green'

HSE UNIVERSITY: **PARTNERSHIPS**



UNIVERSITY PARTNERSHIP PROGRAMME TO SUPPORT REGIONAL ACADEMIC INSTITUTIONS FUNDED

by HSE University; projects are accessible and open to all of Russia's educational community

over **20**

projects with mirror laboratories, supporting joint research projects with regional universities every year

80 JOINT DEPARTMENTS

with various organizations, institutes and companies, including 30 RAS institutes

HIRING OVER 50 POSTDOCS

from Russian universities and research organizations every year

INSTRUCTION OF STUDENTS FROM OTHER RUSSIAN ACADEMIC INSTITUTIONS

through HSE University e-courses; 50 partner universities, involving 10,000 learners

HSE UNIVERSITY: AN INTELLECTUAL ENVIRONMENT

ВЫСШАЯ ПРОБА

All-Russian Olympiad of School Students has been held since 1998. School students in Grades 7 through 11 from all Russian regions, as well as other countries, may take part.

HSE INTERNATIONAL OLYMPIAD

The HSE International Olympiad is the University's biggest international project. Foreign citizens and stateless persons, in Grades 10-11 (11-12), may take part. The competition offers participants the chance to receive grants for studies at HSE University.

TOP CLASS

The Top Class competition contenders carry out and defend their research and project works in various fields, from the humanities to technical sciences.

HIGHER LEAGUE

The first Higher League Olympiad for students and graduates was held in 2009; it covers a wide range of fields and tracks, reflecting the diverse professional interests of its participants. Students and graduates of other universities can take part regardless of citizenship.



HSE UNIVERSITY: A DIGITAL SPACE

A SINGLE VIRTUAL LEARNING ENVIRONMENT (SmartLMS)

HSE University's virtual learning environment brings together all stakeholders in the academic process.

Teachers upload course materials, assignments and tests, while students submit their homework.

HSE MOBILE APPS FOR LEARNERS

HSE AppX – an app that can help users view their timetables, course grades, ratings at any period, etc.

'Vyshka.Navigation' - a detailed navigator for all HSE University buildings on Pokrovka, Shabolovka, Myasnitskaya and Malaya Ordynka.

DIGITAL BUDDIES: DIGITAL SUPPORT FOR INTERNATIONAL STUDENTS

This is a digital support service where enquiries from international students at HSE University are processed.

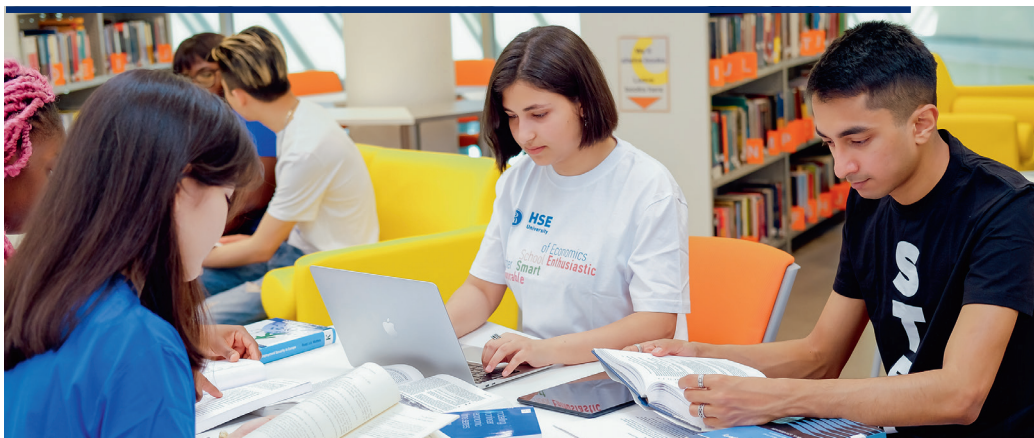
Digital Buddies help students navigate our institution's digital space.

Specialists can provide assistance on all issues related to operations of digital platforms, services, systems and resources at the University.

Enquiries not concerning digital services will be passed on to respective services of HSE University.



HSE UNIVERSITY: USEFUL INFO



CAFETERIAS AND CAFES

located in all HSE University buildings, offering nutritious meals at an affordable price.

SPORTS AND RECREATION

- gyms
- sports clubs and groups
- student sports organizations

Participants may both train with student athletic organizations and create and launch new sports-based projects.

HSE LIBRARY

The HSE Library's stock includes over 700,000 academic materials.

A total of nine libraries operate on campus.

The Central Library is located at the Pokrovka Complex on Pokrovsky Bulvar.

The reading room at the Central HSE Library works 24/7.

HSE BOOKSHOP

At BookVyshka, the University's bookstore, visitors can buy:

- HSE University publications (printed by the HSE Publishing House)
- works on various topics by Russian and foreign authors
- HSE University branded merchandise

HOW CAN I APPLY TO HSE UNIVERSITY?

Undergraduate Studies:



Graduate Studies:




Conversion system for national and international examination and Olympiad results.

Accommodation in modern, comfortable dormitories and rented student housing.

More detailed information on international admissions can be found at:
admissions.hse.ru/en

Contact us at:

 <https://vk.com/hse.inter>

 https://t.me/HSE_admissionsBA
<https://t.me/HSEenter>

 +7 916 311 85 21 WhatsApp/Telegram

 inter@hse.ru

